

Dexter Way, Winscombe

Guide Price £475,000

🛏 4 🍷 2 🚗 1

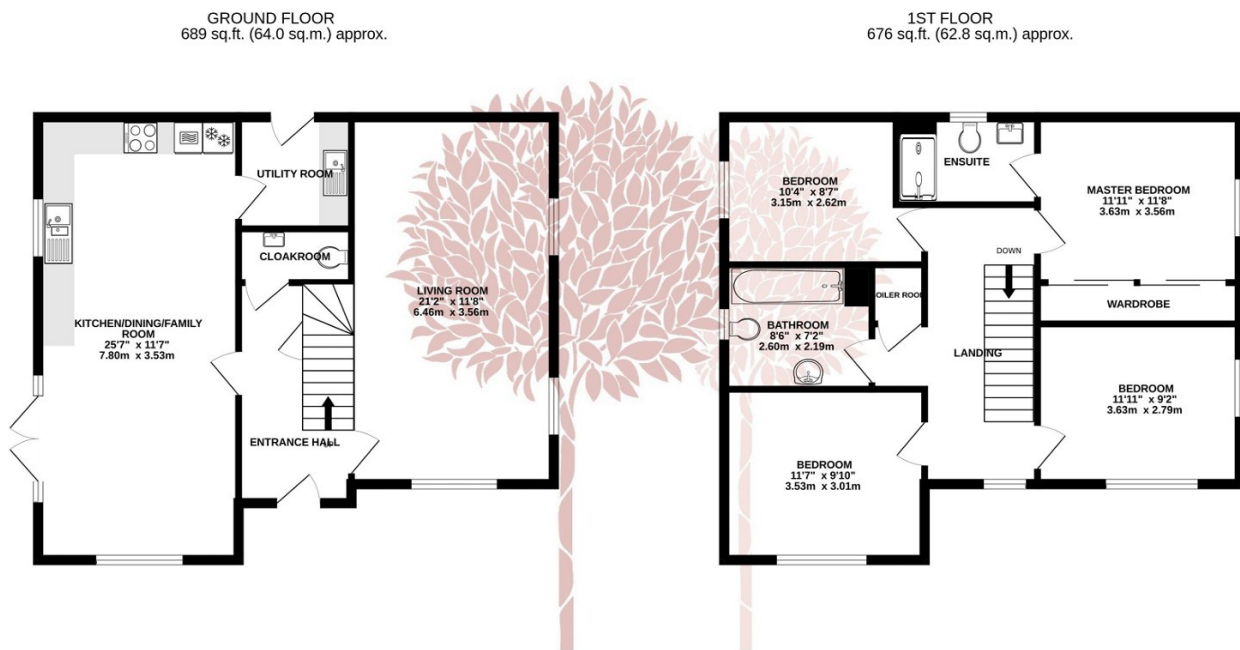


SUPERB - A four-bedroom detached family home situated in the highly desirable Woodborough Grange development in Winscombe, presented in excellent decorative order with a delightful south facing garden, single garage, parking and no onward chain



Key Features

- A superb four-bedroom detached family home with south facing garden
- Close to excellent local amenities and schools
- Spacious kitchen/dining/family room and dual aspect living room
- Separate utility room and cloakroom
- Council Tax band F
- Situated in popular Woodborough Grange in Winscombe
- Generous light filled accommodation
- Off street parking plus single garage
- No onward chain
- EPC rating B



TOTAL FLOOR AREA: 1365 sq.ft. (126.8 sq.m.) approx.

Whilst every attempt has been made to ensure the accuracy of the floorplan contained here, measurements of doors, windows, rooms and any other items are approximate and no responsibility is taken for any error, omission or mis-statement. This plan is for illustrative purposes only and should be used as such by any prospective purchaser. The services, systems and appliances shown have not been tested and no guarantee as to their operability or efficiency can be given.
Made with Metropix ©2023

